

OSHPD

Certified

OSP No.: OSH-0500-10



SHAKER TABLE TESTED

Seismic Certified to SDS Level 3.0g

Certified to: IBC2015, CBC2016, Test criteria ICC-ES AC156

- Listed to UL924 and UL1778 by CSA
- Supports all types of lights include LED & HID
- LCD Panel for Monitoring
- 98% typ. Efficiency Fast Transfer
- 94% typ. Efficiency Online
- Pulse Width Modulated (PWM)
- Generator Compatible with Auto Governor
- Double Conversion Technology
- Self Testing and Diagnostic
- Inverter Test Switch (manual)
- Local & Remote Global Monitoring System (optional)
- Wireless Battery Monitoring System (optional)



Seismic Series Emergency Lighting Inverters

Power Wave

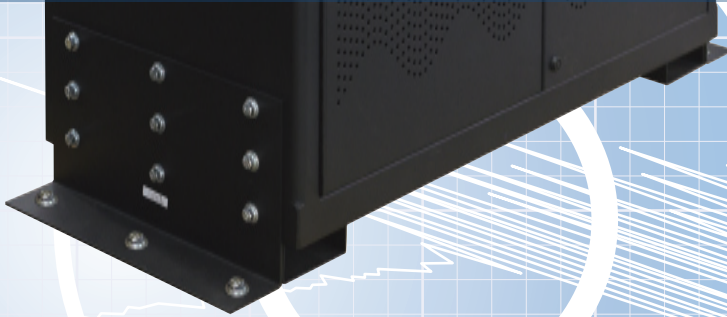
Single Phase: 3 kW to 17 kW

Three Phase: 8 kW to 50 kW



OnLine
POWER
www.onlinepower.com

SHAKER TABLE Tested to SDS Level 3.0g



Power Wave 1

3 kW - 17 kW, Single Phase

Listed to UL924 & UL1778 by CSA

Approved by OSHPD #OSP-0500-10

Power Wave 1 is an On line, double conversion system, with many options available. This system is available from 3kW -17kW. It will support all types of lighting including LED and HID. The Power Wave 1 is available as a Fast Transfer system (under 2 milliseconds transfer time). These UL924 Listed inverters have 90 minutes of VRLA (Valve Regulated Lead Acid) battery run time to power emergency egress lighting.

STANDARD FEATURES

- Back-lit LCD Display (4x20) for monitoring
- Provision for RS 232 & RS 485 ports for metering, measuring, and diagnostic
- Generator Compatible with Automatic Governor (Slew Rate 2Hz/sec.)
- High Frequency PWM with Digital Signal Processing Technology
- Built-in Input Power Factor Correction
- Battery Breaker and Inverter Test Switch

OPTIONS

- Output Auxiliary Built in Distribution Breaker: Normally On, Normally Off, Normally Off with Time Delay
- Main Input and Output Circuit Breaker
- Custom KAIC Main Input and/or Output Circuit Breaker
- Make Before Break Internal Maintenance Bypass Switch
- External Wrap Around Maintenance Bypass Switch (This option will not be offered with Secondary Auxiliary Circuit Breakers)
- Fast Transfer
- Local Event Logger
- Long Life Battery
- Form 'C' Contacts (5), (N.O.)
- Remote Status Panel Unit with Audio Alarm and Silence Switch
- RS232 or 485 for dedicated computer
- Input Transient Voltage Surge Suppressor
- Global Monitoring System for remote computer with Event Log, Texting, and Email capability: SNMP, SNMP with GPRS, SNMP with WIFI, SNMP with Modem
- Wireless Battery Monitoring System
- Extended Warranty and Service Plans
- Spare Part Kits Available

Shock and Vibration	MODEL NUMBERS					
	Unit Name	Capacity kW	Input Voltages	Output Voltages	Transformer	Phase In/Out
SV-	PW Power Wave 1	3.0 = 3 kW	A = 120V	0100 = 120V	N No Transformer (Same Input and Output Volt)	1 Single Phase
		5.0 = 5 kW	B = 208V	1300 = 208V		
		6.0 = 6 kW	D = 240V	0400 = 240V		
		7.5 = 7.5 kW	R = 277V	2500 = 277V		
		8.0 = 8 kW	H = 480V Transformer	58A0 = 120/240V		
		010 = 10 kW		58B0 = 277/120V (50% Load)		
		012 = 12.5 kW		58C0 = 480V		
		015 = 15 kW		58D0 = 480/277V (50% Load)		
		017 = 17 kW				

kW	Wgt (lbs)	*Cabinet Size (W" x H" x D")	Foot Print with Mounting Brackets
3.0	1284	39 X 68 X 18	46 X 68 X 18
5.0	1284	39 X 68 X 18	46 X 68 X 18
6.0	1340	39 X 68 X 18	46 X 68 X 18
7.5	1340	51 X 70 X 30.5	58.75 X 70 X 30.5
8.0	1795	39 X 68 X 18	46 X 68 X 18
10.0	2438	51 X 70 X 30.5	58.75 X 70 X 30.5
12.5	3681	51 X 70 X 30.5	58.75 X 70 X 30.5
15.0	3852	51 X 70 X 30.5	58.75 X 70 X 30.5
17.0	4512	51 X 70 X 30.5	58.75 X 70 X 30.5

* Cabinet includes Battery

Model Number Example: SV-PW3.0A0100N1

Power Wave 1, 3kW, 120V Input Voltage, 120 Output Voltage, No Transformer, Single Phase

OSHPD Certified Emergency Lighting Inverters

Power Wave 3

8 kW - 50 kW, Three Phase

Listed to UL924 & UL1778 by CSA
Approved by OSHPD #OSP-0500-10



Power Wave 3 is available from 8kW - 50 kW. It will support all types of lighting including LED and HID. The Power Wave 3 is available as a Fast Transfer unit under 2 milliseconds. These UL924 Listed inverters have 90 minutes of VRLA (Valve Regulated Lead Acid) battery run time to power emergency egress lighting.

STANDARD FEATURES

- Double conversion On-Line Central Lighting Inverter for all lights
- Back-lit LCD Display (4x20) for monitoring
- Provision for RS 232 & RS 485 ports for metering, measuring and diagnostic
- High Frequency PWM with Digital Signal Processing Technology
- Main Input and Output Circuit Breaker
- Generator Compatible with Automatic Governor (Slew Rate 2Hz/sec.)
- Battery Breaker and Inverter Test Switch
- Make Before Break Internal Maintenance Bypass Switch
- TVSS

OPTIONS

- Output Auxiliary Built in Distribution Breaker: Normally On, Normally Off, Normally Off with Time Delay
- Custom KAIC Main Input and/or Output Circuit Breaker
- External Wrap Around Maintenance Bypass Switch (This option will not be offered with Secondary Auxiliary Circuit Breakers)
- Fast Transfer
- Local Event Logger with Touch Screen
- Long Life Battery and High Temperature Battery
- Form 'C' Contacts (5), (N.O.)
- Remote Status Panel Unit with Audio Alarm and Silence Switch
- Local Audio Alarm with Silence Switch
- RS232 or 485 for dedicated computer
- Global Monitoring System for remote computer with Event Log, Texting, and Email capability: SNMP, SNMP with GPRS, SNMP with WIFI, SNMP with Modem
- Wireless Battery Monitoring System
- Extended Warranty and Service Plans
- Spare Part Kits Available

Shock and Vibration	MODEL NUMBERS							
	Unit Name	Capacity		Input Voltages	Output Voltages	3 phase LH Series		
		kVA	kW					
SV-	PW Power Wave 3	010	10 kVA	8 kW	B 208Y/120	05 208Y/120	LHT3-VA KVA rating	
		015	15 kVA	12 kW				
		020	20 kVA	16 kW				
		025	25 kVA	20 kW	H 480Y/277	09 480Y/277		
		030	30 kVA	24 kW				
		040	40 kVA	32 kW				
		050	50 kVA	40 kW				
		050		50 kW				LHT3 KW rating

Model Number Example: SV-PW015B09LHT3-VA

Three Phase Power Wave 3, 15 kVA (12kW),
208Y/120V Input Voltage, 480Y/277 Output Voltage

kW	Inverter Cabinet		Battery Cabinet		
	Cabinet Size (Foot Print) W" X H" X D"	Total Weight (lbs)	Cabinet Size (Foot Print) W" X H" X D"	Qty	Total Weight (lbs)
8	39 x 68 x 18 (46 x 68 x 18)	1083	39 x 68 x 18 (46 x 68 x 18)	1	1392
12	39 x 68 x 18 (46 x 68 x 18)	1446	51 x 70 x 30.5 (58.75 x 70 x 30.5)	1	3224
16	39 x 68 x 18 (46 x 68 x 18)	1679	51 x 70 x 30.5 (58.75 x 70 x 30.5)	1	3560
20	39 x 68 x 18 (46 x 68 x 18)	1679	51 x 70 x 30.5 (58.75 x 70 x 30.5)	1	4545
24	39 x 68 x 18 (46 x 68 x 18)	1719	51 x 70 x 30.5 (58.75 x 70 x 30.5)	1	4568
32	39 x 68 x 18 (46 x 68 x 18)	2066	51 x 70 x 30.5 (58.75 x 70 x 30.5)	2	8664
40	39 x 68 x 18 (46 x 68 x 18)	2463	51 x 70 x 30.5 (58.75 x 70 x 30.5)	2	8800
50	39 x 68 x 18 (46 x 68 x 18)	2565	51 x 70 x 30.5 (58.75 x 70 x 30.5)	3	12700

Foot Print includes Seismic Mounting Bracket on both sides.

Specifications are subject to change without prior notification.

Global Monitoring System

GMS
Global Monitoring System
for Battery Backup Systems & Emergency Lighting Inverters

The most advanced Local/Remote Monitor,
Data/Event Logging via SNMP, Wire or Wireless

Summary Bypass 07/07/11 15:38:34
00/MM/YY hh/mm/ss

Input Charger Inverters ALERT
Power Rating 15kVA

METER BATTERY TEST SCHEDULER 00443
BUZZ ON EVENT LOG

ON BATTERY

Touch Screen

SNMP **WITH** local Event Log Basic SNMP (LAN)

Advanced SNMP (LAN) WIFI

GPRS Mobile Modem Dial-up Modem WIFI

More Products from Online Power



Emergency Lighting Inverters



Outdoor Systems



Power Conditioners



Voltage Regulators



Power Distributors



Medical Power

Wireless Battery Monitoring System

Up to 50 meter (164 ft.)
distance of Wireless.

24 GHz wireless frequency

Operating Temperature:
0° to 100°C (32-212°F)



14000 S. Broadway St., Los Angeles, CA 90061
Tel: (800) 227-8899 Fax: (323) 721-3929
www.onlinepower.com

